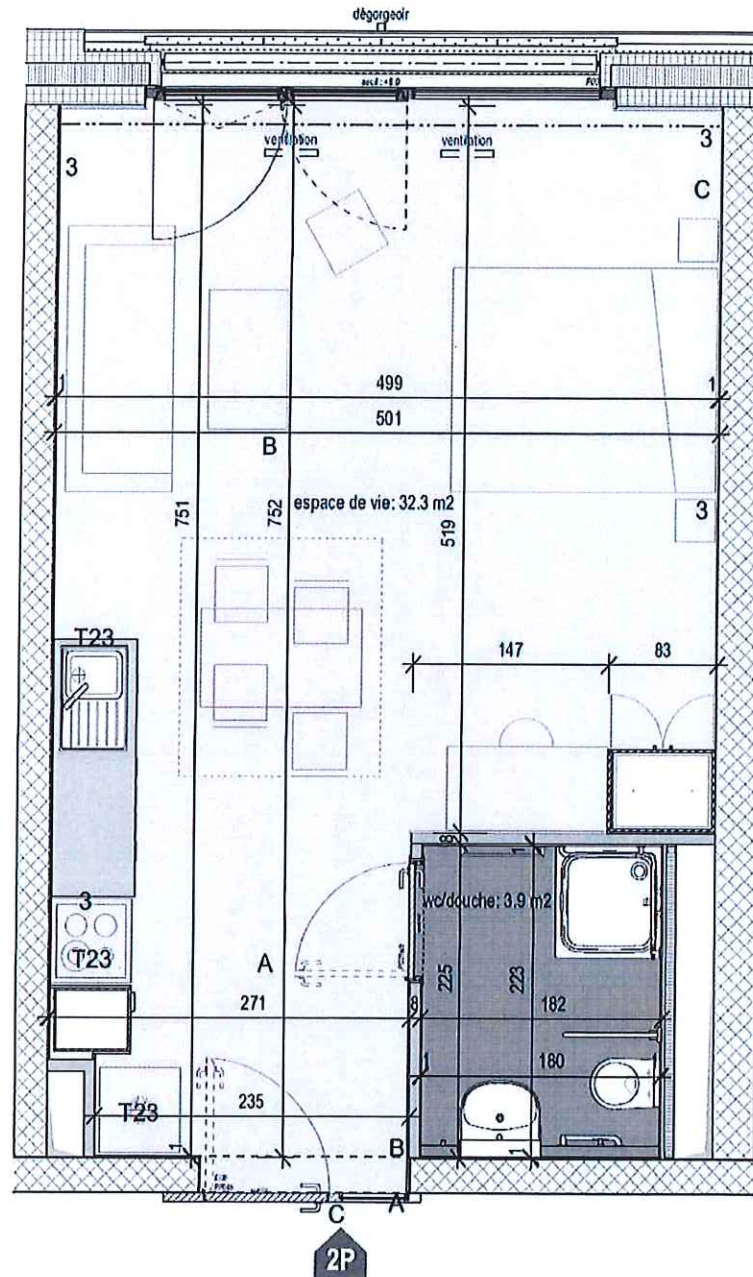




TYPOLOGIE DES APPARTEMENTS

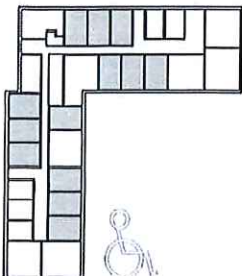
2 PIECES CATEGORIE A



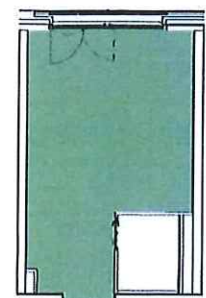
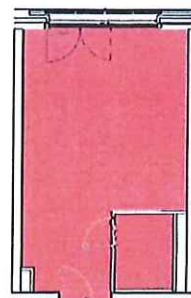
2P

S nette LGL 32.3 m²

SUP 36.1 m²



- 2P
- +1 x 9 uni.
- +2 x 13 uni.
- +3 x 13 uni.
- +4 x 12 uni.
- +5 x 12 uni.
- +6 x 6 uni.
- +7 x 6 uni.
- total = 71 uni.

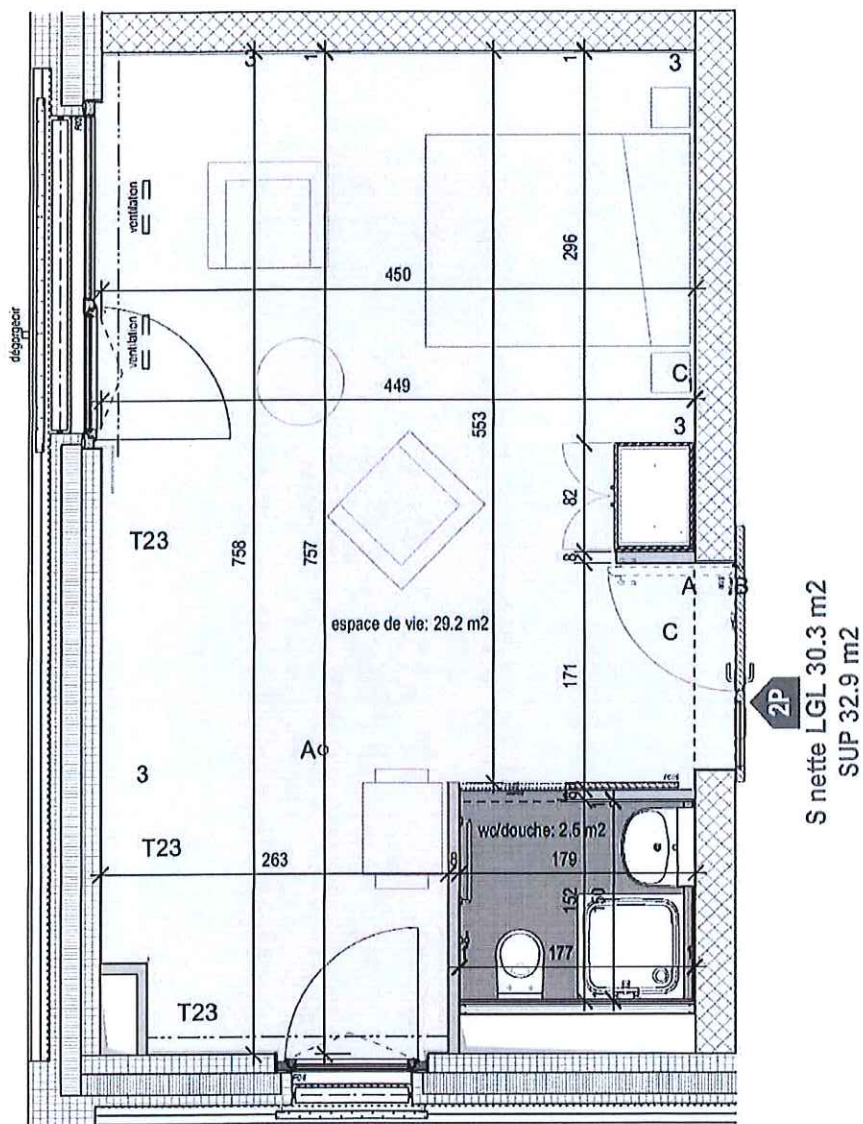




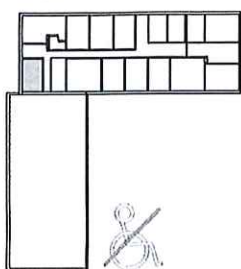
TYPOLOGIE DES APPARTEMENTS

2 PIECES CATEGORIE C

(non adapté aux personnes à mobilité réduite)



niveau 7



2P-C

+1 x 0 uni.
+2 x 0 uni.
+3 x 0 uni.
+4 x 0 uni.
+5 x 0 uni.
+6 x 0 uni.
+7 x 1 uni.
total = 1 uni.

